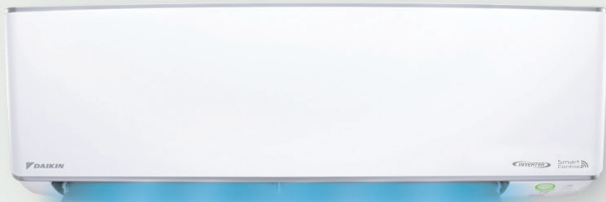




FTKH-0921-K



R32 Inverter

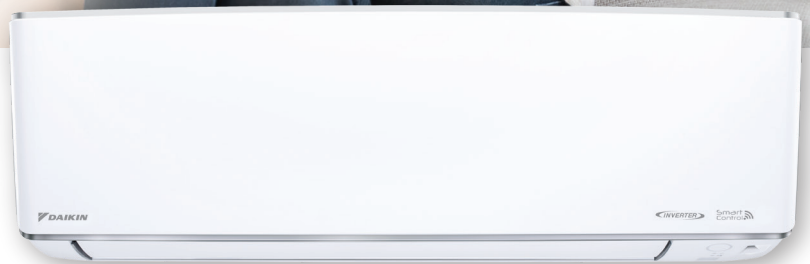
Wall Mounted
SMARTO
FTKH Series

R32



SMARTO

PREMIUM INVERTER



Features

Smart Powerful + Operation

A smart feature that ensures maximum cooling performance delivered by engaging the indoor fan motor to run at maximum speed for 20mins. Utilizing the intelligence of sensor to detect human presence and to direct the airflow towards the detected human presence area for a faster and more efficient cooling.

Smart+ CLEAN Better Indoor Air Quality Using 3 Powerful Air Purification

Gin-Ion Blue Filter

This filter is treated with a positively charged silver ion, which efficiently draws viruses onto its surface and decomposes up to 99.9% in 2 hours. On top of that, this filter can deactivate bacteria and inhibit fungal growth on its surface to improve the quality of indoor air for a healthier lifestyle. The filter delivers consistent performance for around a year if filter is cleaned once every 2 weeks.

Substances can be collected and deactivate by filter:



PM2.5 Dust Collection Filter

This filter removes PM2.5 particulate matter which is smaller than 2.5 micrometres (µm). PM2.5 is small enough to be breathed deep into our lungs.

Streamer Technology

High speed electrons are discharged that enable decomposition and removal allergens such as mould, mites, pollen and hazardous chemical.

Smart Ecomax

A smart feature that ensures maximum energy saving while fulfilling basic human comfort needs. Utilizing the intelligence of sensor to detect human presence in room while adjusting set temperature automatically while limiting the maximum power consumption.

Smart Control GO DAIKIN

This built-in network adaptor (AWM61A01) and the app turn a smartphone into a remote controller that can be used inside or outside the home. Together, they help to not only save energy and maintain comfort but also eliminate any worries of forgetting to turn off your air conditioner! (Certain app functions are optional.)

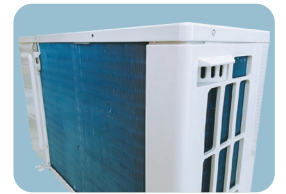
Durable PCB (PCB Voltage Shield)

Newly designed printed circuit board (PCB) for higher voltage surge tolerance. This PCB can easily handle large variations of voltage (130V-415V) therefore ensuring longer life span.

Anti-Corrosion Treatment of Outdoor Heat Exchanger Fins

The outdoor unit's heat exchanger fins are processed using a special anti-corrosion treatment. The surface is covered with a thin acrylic resin layer to enhance the fins' resistance to salt corrosion.

Higher Corrosion Resistance Gold Fin is available (Optional)



GO DAIKIN

In-Home & Out-Of-Home Function Allows You To Control Your AC At Anywhere Anytime.

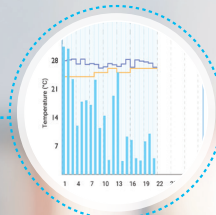


Scan the QR code to find out more!



GO CONVENIENCE

- In-home & Out-of-home function allows you to control your AC at anywhere anytime.
- Weekly scheduling allows you to set your AC at your preferred timing at a weekly basis.



GO SAVE

- Statistical energy usage graphs that allows you to monitor and keep track of your daily energy usage to ensure an efficient AC operation.
- With this, greater savings can be achieved as you can now smartly monitor your AC energy consumption!

* The energy consumption values are based on averaged data; Monetary values is calculated based on domestic tariff A at 21.8sen/kWh.



GO COMFORT

- Different operational modes allows you to enjoy the different kinds of cooling experience.
- Advance control* that provides you with even more cooling options for a better cooling comfort.

* May vary depends on model availability



GO SHARE

- User control sharing easily allows you to share your AC controls with your family members through a simple QR code scanning.
- You can unbind the controls or restrict certain app functions of the AC from your family members at any time you desire.

GO DAIKIN Configuration

Internet

OUT OF HOME
GO DAIKIN
Control your AC at anywhere and anytime

SPECIFICATIONS	
Input Voltage	DC 5V
Power Consumption	750mW
Size (H x W x D)	32.1mm x 50.1mm x 15.0mm
Mass	APPROX. 23g
Wireless Lan Protocol	IEEE 802.11b/g/n
Frequency Range	2.4GHz – 2.48GHz
Encryption	WPA/WPA2

Required for Operation:

+

 Android™ Phone or iPhone
 +

 GO DAIKIN App (free)
 +

 Wireless Router
 +

 Internet

Available At:



STEP 1

Download GO DAIKIN App

STEP 2

Locate the QR Code (beside MCMC label) sticker on your warranty card or inside the WiFi Adaptor box, and scan it to pair your AC with your smartphone.

STEP 3

Voila! You can now control your AC from your smartphone

Scan QR code to see GO Daikin setup video

ENJOY 2 YEARS FREE*1 UPGRADE TO PRO ON US

Function List	Standard RM0.00	Pro RM11.99 Per year
Standard Control Functions *2	✓	✓
User Control Sharing to Family & Friends	✓	✓
In-Home AC Control	✓	✓
Out-Of-Home AC		✓
Indoor/Outdoor Temperature Monitoring		✓
Energy Usage Monitoring		✓
Weekly Scheduling		✓
Countdown Timer		✓
Auto Error Code Detection	✓	✓
Voice control (Alexa, Google Home)	✓	✓

Smart Control Subscription:

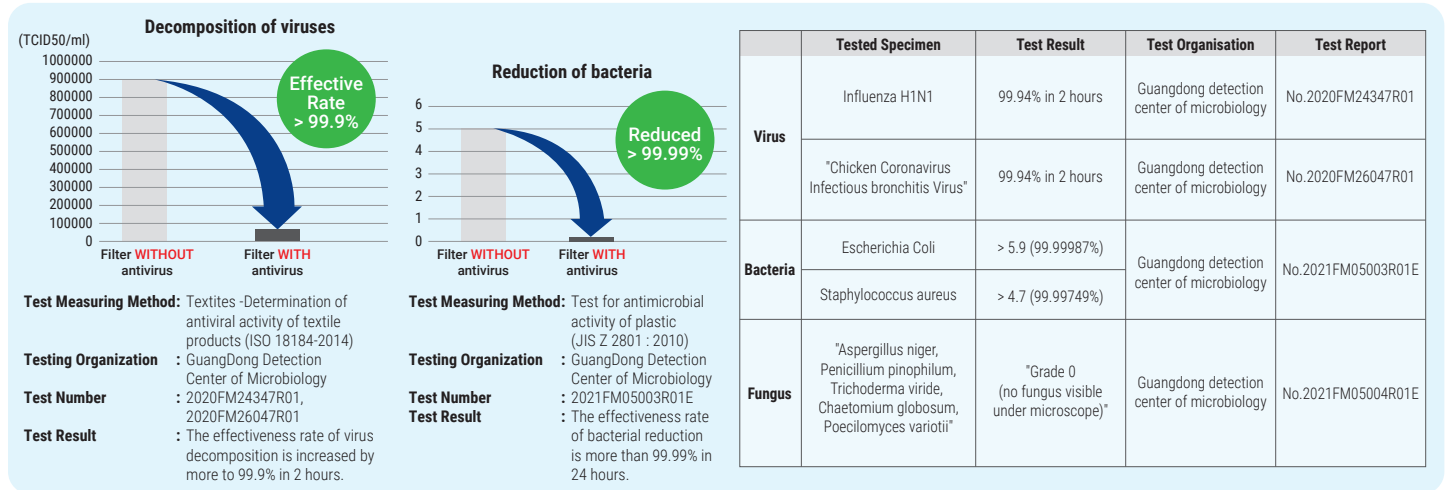
- Free 2 years upgrade to Smart Control Pro upon first time successful pairing to network adaptor (AWM61A01). Package will switch back to Smart Control Standard (FREE) after 2 years. User can choose to upgrade to Smart Control Pro with subscription of RM 11.99 yearly per air conditioner.
- Function includes: On/Off, Operation Mode, Fan Swing, Fan Speed, Powerful Mode, Quiet Mode, Sleep Mode.

Go Daikin App:

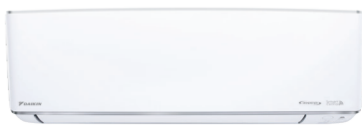
- An Internet connection through mobile data or WiFi network is required to use Smart Control function.
- Connectivity of App to AC will depend on the effective coverage area of your Local Area Network (LAN).
- This device supports DHCP (Dynamic Host Configuration Protocol) only. Ensure that your router has DHCP server option function activated before pairing.
- The controllable functions and features may differ depending on the model.

Gin-ION Blue Filter Test Result

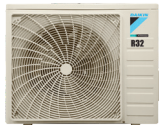
The Gin-ION Blue Filter has been tested and confirmed to decompose viruses, bacteria, and inhibit fungal growth on the filter surface.



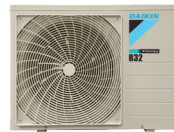
Specification



FTKH28/35/50BV1MF



RKU28/35BV1M



RKU50BV1M



ARC485A2



Model name	Indoor unit		FTKH28BV1MF		FTKH35BV1MF		FTKH50BV1MF	
	Outdoor unit		RKU28BV1M		RKU35BV1M		RKU50BV1M	
Capacity	Rated (Min - Max)	kW	2.84 (1.08 - 3.40)		3.55 (1.17 - 3.81)		5.57 (1.76 - 6.21)	
		Btu/h	9,700 (3,700 - 11,600)		12,100 (4,000 - 13,000)		19,000 (6,000 - 21,200)	
Power supply			1 phase, 220-240 V, 50 Hz (Power to Indoor)					
Running current	Rated	A	3.28		4.20		6.90	
Power consumption	(Min - Max)	W	720 (260 - 1,200)		940 (280 - 1,250)		1,570 (420 - 2,200)	
CSPF		Wh/Wh	6.40		6.31		5.75	
Energy rating			5 star					
Heat insulation			Both liquid and gas piping					
Indoor unit			FTKH28BV1MF		FTKH35BV1MF		FTKH50BV1MF	
Airflow rate	H	cfm	380		400		430	
Sound pressure levels	H / L / SL	dB(A)	39 / 27 / 20		40 / 28 / 22		43 / 33 / 31	
Dimensions	H x W x D		288 x 779 x 246					
Unit weight			9.5				10.0	
Outdoor unit			RKU28BV1M		RKU35BV1M		RKU50BV1M	
Refrigerant	Type				R32			
Sound pressure levels	H	dB(A)	45		46		49	
Dimensions	H x W x D		550 x 658 x 273				615 x 845 x 300	
Unit weight			24		26		37	
Piping connection	Liquid	mm			ø6.35			
	Gas				ø9.52		ø12.70	
Chargeless pipe length					7.5			
Maximum pipe length					20		30	
Maximum elevation length					15		20	
Heat Exchanger	Type		Hydrophillic Blue Fin					

Remarks:

1. Due to product innovation, all specifications are subjected to change by the manufacturer without prior notice.
2. All units are being tested and comply to ISO5151.
3. Nominal cooling capacity are based on the conditions: 27°C DB / 19°C WB indoor and 35°C DB outdoor ; piping length 7.5m.
4. Sound pressure levels are measured in anechoic chamber according to JIS C 9612 standard. During actual operation, sound pressure level will be higher as a result of room specification condition.
5. The Gin-ION Blue Filter is not a medical device. Benefits shown are only effective for substances which are directly attached on the filter surface.

DAIKIN MALAYSIA SALES & SERVICE SDN. BHD.

Call Centre: 1300-88-DAIKIN(324546)

198301014326 (109719-M)

Email: sales_enquiry@daikin.com.my, customer_service@daikin.com.my

- Branches:**
- Kedah Tel: 04-730 5670
 - Johor Tel: 07-557 7788
 - Penang Tel: 04-331 1670
 - Pahang Tel: 09-567 6778
 - Perak Tel: 05-548 2307
 - Kelantan Tel: 09-747 4578
 - Negeri Sembilan Tel: 06-768 8969
 - Sabah Tel: 088-722 194
 - Melaka Tel: 06-288 1133
 - Sarawak Tel: 082-333 299

Website: www.daikin.com.my

Authorized dealer: